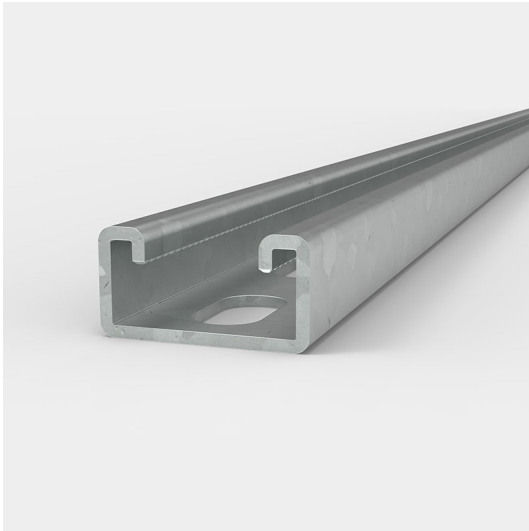


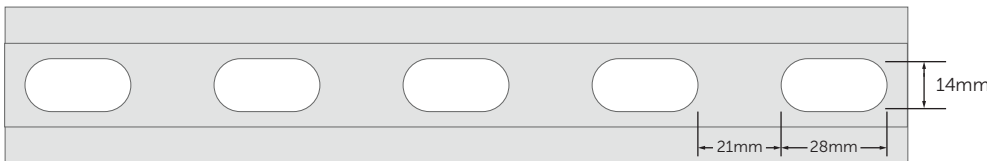
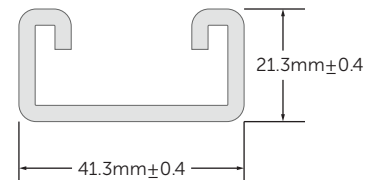
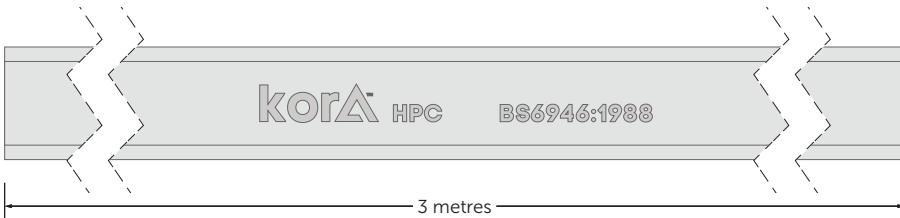
41mm x 21mm x 3m Heavy Gauge Slotted HDG Channel

Product Code: T021-513



Description
Slotted steel channel hot dip galvanised
Material
2.5mm thick steel
Dimensions
41mm x 21mm x 3m
Finish
Hot Dip Galvanised $\geq 55\mu\text{m}$

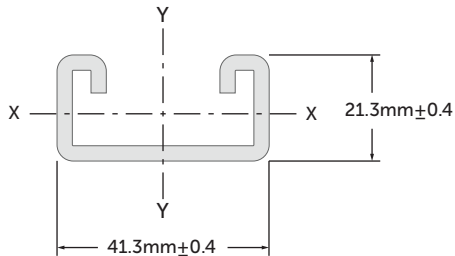
- Pack quantity 50 - Supplied separately
- Conforms to BS 6946:1988
- Each length is marked Kora HPC for traceability
- Teeth for ease of channel nut installation
- Very high grade galvanisation



Application

- Suspend services including electrical, pipework, sprinklers and ventilation systems.
- Enable frames to be built as freestanding units for supporting building services.
- Cut to required length for convenience, protect cut ends using a galvanising paint.

Load Data



Section properties	
Area	2.46cm ²
Weight	1.90kg/m
I x-x	1.40cm ⁴
Z x-x	1.70cm ³
r x-x	0.75cm
I y-y	5.88cm ⁴
Z y-y	3.54cm ³
r y-y	1.55cm

Length (mm)	Max Uniform Load (kg)	Deflection at Max Load (mm)	Column Max Load (kg)
500	280	1.18	3060
1000	140	5.08	2040
1500	95	12.28	-
2000	70	22.36	-
2500	55	35.72	-
3000	45	52.80	-

Material	Coating
<p>A</p> <p>Steel</p>	<p>Z ZINC</p> <p>Hot Dip Galvanised Thickness $\geq 55\mu\text{m}$</p>