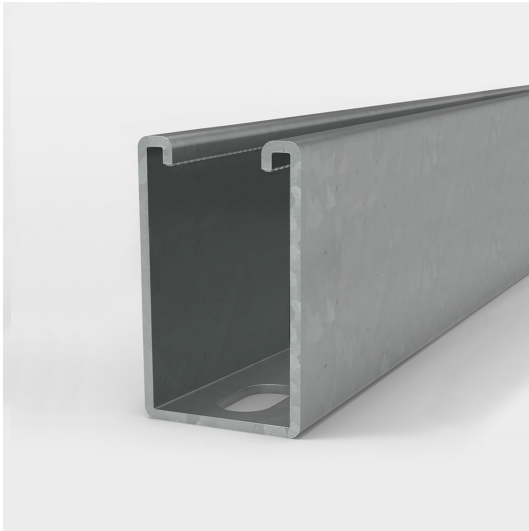


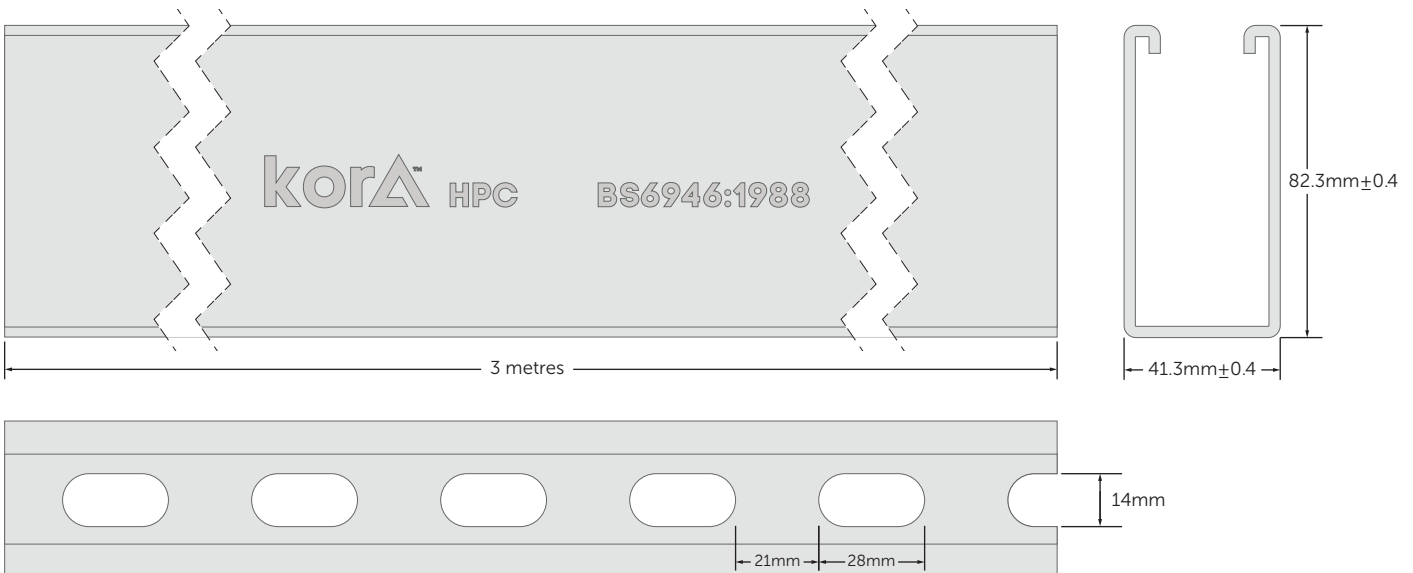
41mm x 82mm x 3m Heavy Gauge Slotted Pre-Galv Channel

Product Code: T021-723



Description
Slotted steel channel pre-galvanised
Material
2.5mm thick steel
Dimensions
41mm x 82mm x 3m
Finish
Pre-Galvanised Zinc-plated $\geq 19\mu\text{m}$

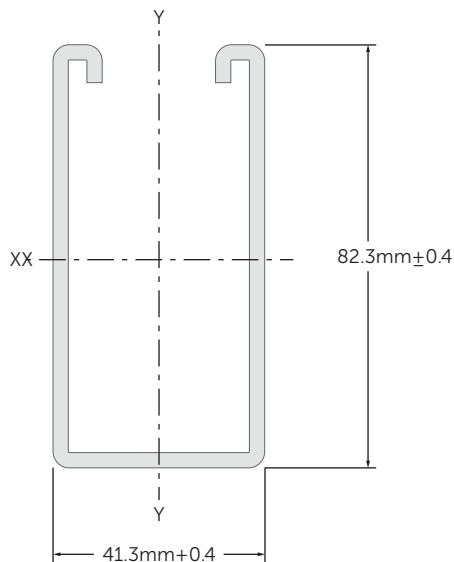
- Pack quantity 50 - Supplied separately
- Conforms to BS 6946:1988
- Each length is marked Kora HPC for traceability
- Teeth for ease of channel nut installation
- Very high grade galvanisation



Application

- Suspend services including electrical, pipework, sprinklers and ventilation systems.
- Enable frames to be built as freestanding units for supporting building services.
- Cut to required length for convenience, protect cut ends using a galvanising paint.

Load Data



Section properties

Area	5.52cm ²
Weight	4.24kg/m
I x-x	44.35cm ⁴
Z x-x	13.91cm ³
r x-x	2.83cm
I y-y	17.51cm ⁴
Z y-y	9.50cm ³
r y-y	1.78cm

Length (mm)	Max Uniform Load (kg)	Deflection at Max Load (mm)	Column Max Load (kg)
500	-	-	1980
1000	1223	4.04	1310
1500	815	5.76	840
2000	612	9.64	590
2500	489	14.76	450
3000	408	21.08	360

Material	Coating
<p>A</p> <p>Steel</p>	<p>Z ZINC</p> <p>Pre-Galvanised Zinc-plated ≥ 19µm</p>